



Automotive

Surfaces for extraordinary automotive design

Exclusive look, feel and functionality

In automotive design, real metal surfaces add accents of coolness and high quality. With Alanod's surfaces you can now incorporate exciting premium aluminium surfaces into your interior for an exclusive haptic and visual experience.

Stainless steel composite

For speaker covers: Created in a PVD nanotech process



The image shows the interior of a red sports car, focusing on the dashboard, steering wheel, and center console. The car's body is a vibrant red, while the interior components are primarily black and silver. Four white circles with lines pointing to specific areas highlight different material features: the top of the dashboard, the steering wheel, a door handle, and a footplate.

Soft-touch and extra matte

For dash-tops and consoles: Outstanding material for high-quality interiors

Scratch-resistant metal

For frequently touched surfaces: Keeps door handles in great shape

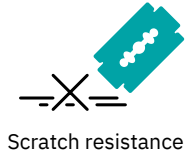
Mouldable, anti-fingerprint

For knobs or switches: Lacquered aluminium, robust and formable

Printable metal

For durable and scratch-resistant prints on metal with open-pore anodization, chrome-free passivation or printable primer

Scratch-resistant



The premium DECO PRIME® aluminium strip can be finished with a patent-pending, in-line hardened lacquer surface. It is extremely scratch-resistant and yet can be moulded without any issues. The scratch-resistant real metal surface is ideal for surfaces that are frequently touched, such as door handles. Thanks to a primer layer or thermoplastic film, the material is ready to be used immediately.



DECO PRIME® ADVANCED

A special UV lacquer adds additional scrub resistance, making the surface robust for cleaning and resistant against stains.



Applications

- Often touched surfaces
- Door sill trims
- Center consoles
- Door panels
- Storage compartments
- Cockpit panels
- Knobs and switches (ventilation, etc.)



Matte, Anti-fingerprint, and Soft-Touch



Extra matte



Anti-fingerprint



Soft-touch

MAST stands for **Matte, Anti-fingerprint, Soft-Touch**. It combines the coolness of the real metal with a velvety touch – and avoids the appearance of fingerprints, typical of stainless steel surfaces. DECO PRIME® MAST is available from 0.1 – 1.0 mm thickness, either brushed or in mill finish. It is coated with translucent pigments and can be pre-treated with adhesion primers for bonding to various plastics (ABS, PVC, etc.).

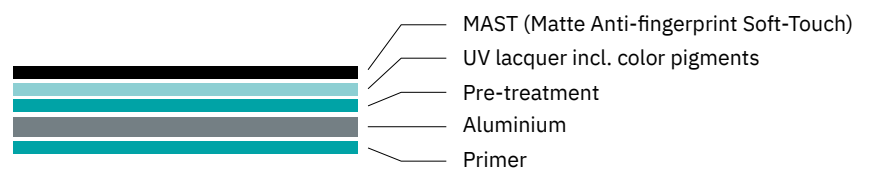


Applications

- Trims and covers
- Door panels
- Cockpit panels
- Center consoles

DECO PRIME® MAST

By incorporating color pigments during the anodizing process, we produce long-term, stable, colored surfaces. The material still retains its natural, metallic character.



Our basic lacquered product



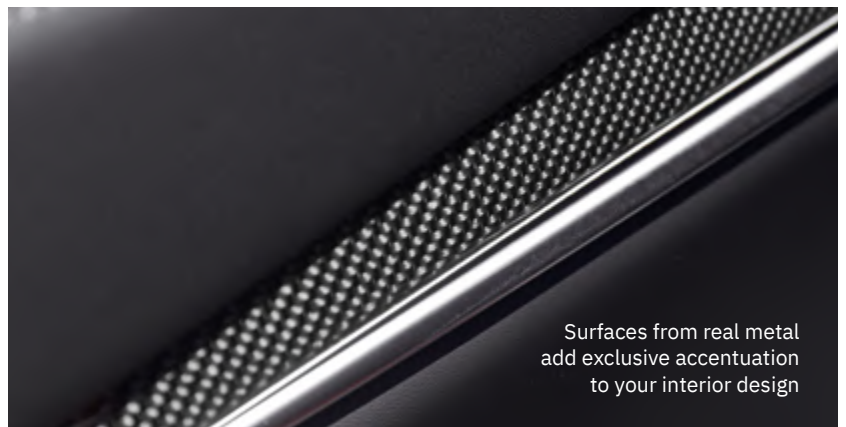
Real metal



Post-forming

To enrich your automotive interior design with a subtle feeling of class and noblesse, add a real metal surface design in various colors. With our DECO PRIME® CLASSIC-L surfaces you can apply real metal to almost any surface adding an infinite range of colors to choose from, with individual colors being available on request.

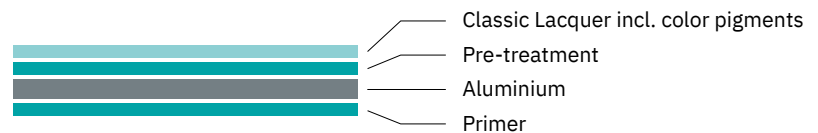




The ability to be post-formable makes it easy to integrate it in your automotive interior in a range of possible ways. That way, you can use the surface in all dimensions, following curvatures and enhancing the design flow in your concept.

DECO PRIME® CLASSIC-L

Choose from a variety of color coatings, structures and give your car design an emotional metallic touch.



Colorful surfaces



Color range

Give your automotive interior design a lasting, emotional metallic touch – with a stunningly brilliant color coating. DECO PRIME® offers you a virtually infinite range of colors to choose from. Individual colors are available on request. DECO PRIME® colored surfaces are available in 0.1 mm, 0.2 mm or 0.75 mm thickness; brushed, in mill finish, or in high gloss mirror finish.

Applications

- Accentuated areas
- Trims and covers
- Door panels
- Control surfaces



DECO PRIME® MAST

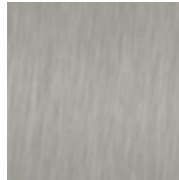
Choose our additional soft-touch lacquer which helps to avoid the appearance of fingerprints, and add a special velvet feeling to the surface. It comes also with an extra matte surface.



champagne



bronze



stainless steel



natural



graphite



anthracite



green

DECO PRIME® ADVANCED & CLASSIC-L

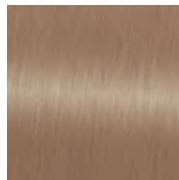
Choose from a variety of color coatings and structures, and give your applications an emotional metallic touch.



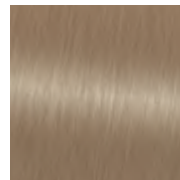
champagne



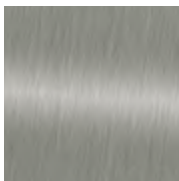
gold



copper



bronze



steel



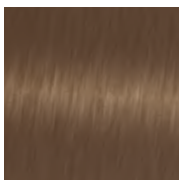
stainless steel



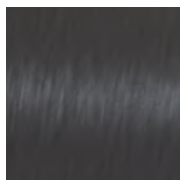
natural



green



dark bronze



graphite



anthracite

Shown above are our standard colors. Other colors and nuances are available on request. Please contact us directly to see more options.

Printable metal



Easy-printability

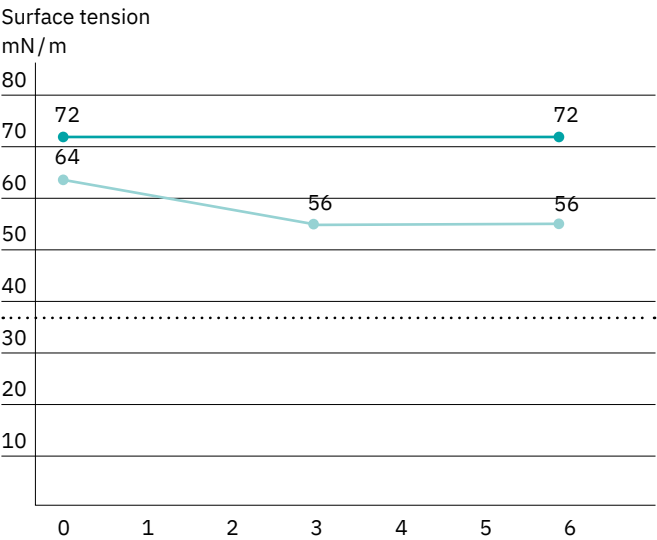
Whether it's branding or a pattern: a sophisticated print on real aluminium creates a sense of prestige. Prints on metal are also virtually unbeatable in terms of durability. The unique DECO PRIME® offers completely new ways and possibilities for you. DECO PRIME® is based on genuine aluminium, which has been given a special coating.

The ready-to-use surface can be printed without further conditioning using a variety of processes before being formed. Thanks to its unique surface properties, forming in no way damages the print, and the surface also remains crack-free and scratch-resistant.

Applications

- Emblems
- Sill trims
- Edition signs
- Entry profiles

DECO PRIME® can be stored for extended periods without oxidation.



Values based on the following storage conditions:
20 °C room temperature, 50 % humidity.

- DECO PRIME® with open-pore anodization
- DECO PRIME® with chrome-free passivation

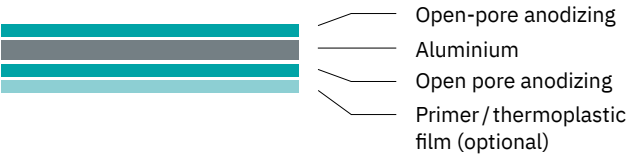
○ Printability limit



DECO PRIME®

Choose from these finishes to suit your print specs:

DECO PRIME® with open-pore anodization



DECO PRIME® chrome-free passivation



DECO PRIME® with printable primer



Whatever you imagine, we help you realise it

In automotive design, every project needs impulses and ideas. With Alanod's system development at your side, you have a wide range of options and opportunities to expand your design into new areas.

The technologies and processes we offer inspire your imagination and creativity and give you the certainty that what you can imagine can be realised.



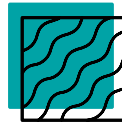
Decorative and / or functional coating

We are able to create surfaces with special properties, e. g. coloring or extra protection. Enrich your automotive interior design with our lacquered surfaces.

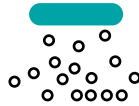


Material compounds – In an extrusion process, Alanod surfaces can be bonded, back-injected and formed with plastics. These products offer economical advantages and help you reduce the weight of components.





In mould decoration – Our surfaces offer ideal conditions for grained structures, e. g. resembling natural materials such as leather or stone. This creates high-quality accentuated surfaces, e.g. for car cockpits, trims and covers.



PVD on metal – PVD technology (physical vapor deposition) is used to create durable metal composite surfaces with decorative (e. g. metal coloring) or functional (e. g. electrical conductivity) properties. Layers of genuine metal are deposited on materials such as aluminium or stainless steel.

Care for the Environment

Conserving natural resources has been part of our corporate philosophy ever since our company was founded in 1975. Today, Alanod is a climate-neutral, sustainably run company. Due to the excellent recycling properties of aluminium, our materials use up to 90 % recycled aluminium. This consumes up to 95 % less energy compared to primary aluminium production.

Our cutting-edge post-combustion technology enables production of all of our materials without the need for excessive energy input. All our electricity needs are met using “100 % green” energy sources.

Made in Germany

Our high-tech materials are all manufactured at our sites in Germany.

System Development

Our broad-based team of experts develops individual solutions for our customers in close cooperation with international research institutions and long-standing industrial partners. Talk to us so that we can work together to fulfill your wishes.



ALANOD GmbH & Co. KG
Egerstr. 12, 58256 Ennepetal
Germany
+49 2333 986 - 500
info@alanod.de

Alanod-Westlake Metal Ind. Inc.
36696 Sugar Ridge Road, North Ridgeville
Ohio 44039, USA
+1 440 327 8184
sales@alanod-westlake.com

**ALANOD Metal Surface
Treatment (Shanghai) Co., Ltd.**
88 Keyuan Road, Zhangjiang
Hi-Tech Park / German Center
201203 Pudong New Area
Shanghai, China
+86 13774207787
mo.weizhong@alanod.de

Alanod-Xxentria Technology Materials
No. 168, Lane 256, Yilin Road
Rende Dist., 717, Tainan City, Taiwan
+886-6-2496885
info@alanod-xxentria.com

**ALANOD Metal Surface
Treatment (India) Private Ltd.**
MIDC Knowledge Park, 2nd Floor, Tower 5
World Trade Centre, 1, Opp. EON Free Zone
Kharadi, Pune, Maharashtra 411014
India
+91 9552102922
bhupendra.kelam@alanod.de

alanod.com